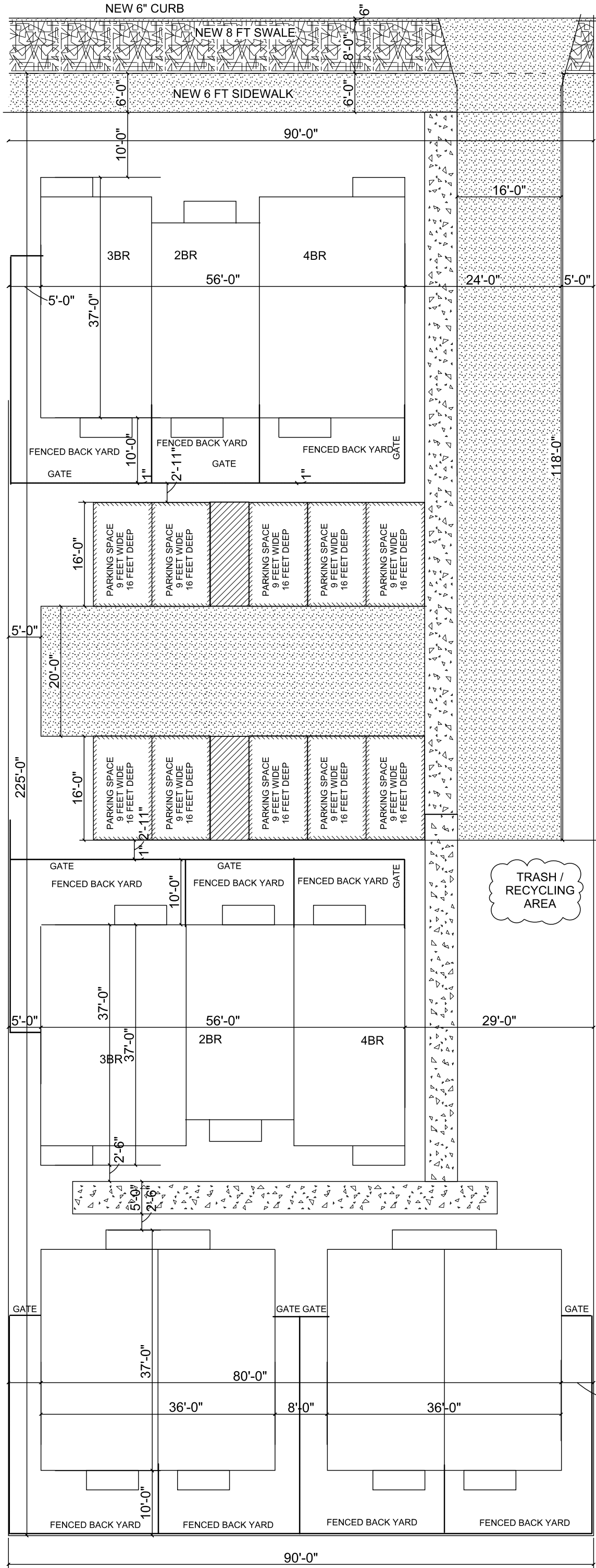


6 FT  
DEDICATION  
REQUIRED



8406 SE BROOKLYN  
LOT 13 BINNSMEAD  
R2 ZONE  
LOT AREA 20,250 SQ FT  
MINIMUM DENSITY 10 UNITS

DEDICATION  
6 FT ALONG BROOKLYN  
540 SQ FT

L1 LANDSCAPING IN BUILDING SETBACKS  
5 FT WIDE SIDEWALKS ON SITE

Habitat for Humanity - Portland / Metro East  
David Bonn, VP of Housing Development  
1478 NE Killingsworth Street Portland, OR 97211  
503.287.9529 x 15